

SSBP2 antibody - N-terminal region
Rabbit Polyclonal Antibody
Catalog # AI10031**Specification**

SSBP2 antibody - N-terminal region - Product Information

| | |
|-------------------|--|
| Application | WB, IHC |
| Primary Accession | P81877 |
| Other Accession | P81877 , NP_036578 , NM_012446 |
| Reactivity | Human, Mouse, Rat, Rabbit, Zebrafish, Pig, Dog, Guinea Pig, Horse, Bovine |
| Predicted | Human, Mouse, Rat, Pig, Chicken, Dog, Guinea Pig, Horse, Bovine |
| Host | Rabbit |
| Clonality | Polyclonal |
| Calculated MW | 38 kDa kDa |

SSBP2 antibody - N-terminal region - Additional Information**Gene ID** 23635**Alias Symbol** DKFZp686F03273, HSPC116, SOSS-B2**Other Names**

Single-stranded DNA-binding protein 2, Sequence-specific single-stranded-DNA-binding protein 2, SSBP2, SSDP2

Target/Specificity

SSBP2 is a member of a closely related, evolutionarily conserved, and ubiquitously expressed gene family. It is also a potential tumor suppressor.

Format

Liquid. Purified antibody supplied in 1x PBS buffer with 0.09% (w/v) sodium azide and 2% sucrose.

Reconstitution & Storage

Add 50 ul of distilled water. Final anti-SSBP2 antibody concentration is 1 mg/ml in PBS buffer with 2% sucrose. For longer periods of storage, store at -20°C. Avoid repeat freeze-thaw cycles.

Precautions

SSBP2 antibody - N-terminal region is for research use only and not for use in diagnostic or therapeutic procedures.

SSBP2 antibody - N-terminal region - Protein Information**Name** SSBP2**Synonyms** SSDP2**Cellular Location**

Nucleus.

Tissue Location

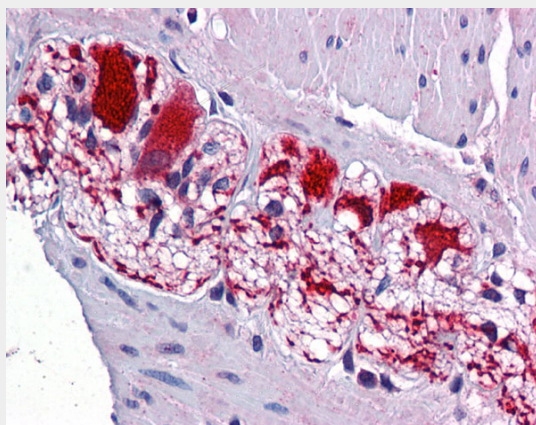
Ubiquitous..

SSBP2 antibody - N-terminal region - Protocols

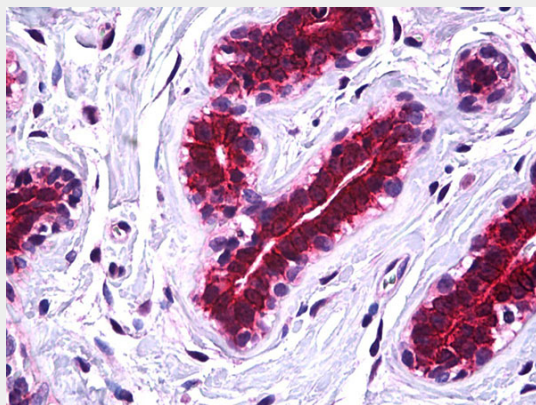
Provided below are standard protocols that you may find useful for product applications.

- [Western Blot](#)
- [Blocking Peptides](#)
- [Dot Blot](#)
- [Immunohistochemistry](#)
- [Immunofluorescence](#)
- [Immunoprecipitation](#)
- [Flow Cytometry](#)
- [Cell Culture](#)

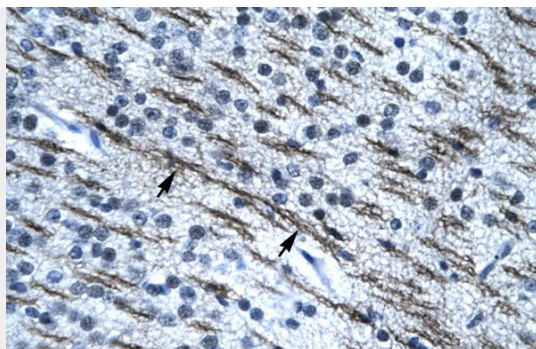
SSBP2 antibody - N-terminal region - Images



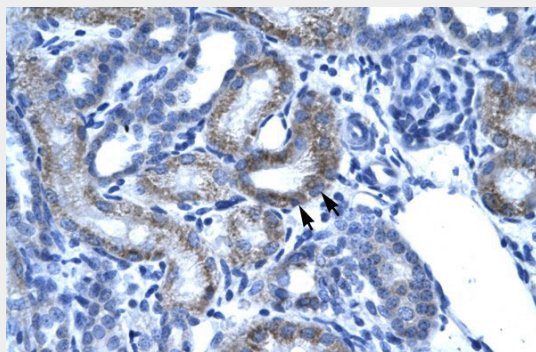
SSBP2 antibody - N-terminal region (AI10031) in Colon, myenteric plexus cells using Immunohistochemistry
Colon, myenteric plexus



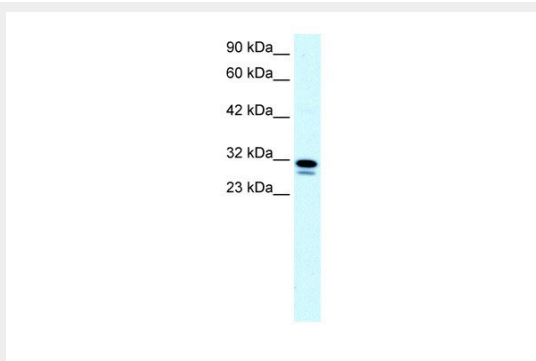
SSBP2 antibody - N-terminal region (AI10031) in breast cells using Immunohistochemistry
IHC Information: Paraffin embedded breast tissue, tested with an antibody dilution of 5 µg/ml.



SSBP2 antibody - N-terminal region (AI10031) in Human Brain cells using Immunohistochemistry
Rabbit Anti-SSBP2 Antibody
Paraffin Embedded Tissue: Human Brain
Cellular Data: Nerve fibre
Antibody Concentration: 4.0-8.0 µg/ml
Magnification: 400X



SSBP2 antibody - N-terminal region (AI10031) in Human kidney cells using Immunohistochemistry
Rabbit Anti-SSBP2 Antibody
Paraffin Embedded Tissue: Human Kidney
Cellular Data: Epithelial cells of renal tubule
Antibody Concentration: 4.0-8.0 µg/ml
Magnification: 400X



SSBP2 antibody - N-terminal region (AI10031) in Human Raji cells using Western Blot
WB Suggested Anti-SSBP2 Antibody Titration: 0.2-1 µg/ml
ELISA Titer: 1:7812500
Positive Control: Raji cell lysate

SSBP2 antibody - N-terminal region - Background

This is a rabbit polyclonal antibody against SSBP2. It was validated on Western Blot and

immunohistochemistry by Abgent. At Abgent we manufacture rabbit polyclonal antibodies on a large scale (200-1000 products/month) of high throughput manner. Our antibodies are peptide based and protein family oriented. We usually provide antibodies covering each member of a whole protein family of your interest. We also use our best efforts to provide you antibodies recognize various epitopes of a target protein. For availability of antibody needed for your experiment, please inquire (sales@abgent.com).